

Rosa M. Curto / Aleix Cabrera

The
fairies
tell us about...
Solidarity

Rosa M. Curto / Aleix Cabrera



The
fairies
tell us about...
Solidarity

“La-la, from the mountains to the sea,
working all day, la-la, la-la...”
Ocladia the Fairy was always singing.
She thought she worked quicker that way,
but the day began before the sun rose and
she didn’t finish until nightfall.





Since she was little she has been a hard worker, the most dedicated of all the fairies. She was the first one to do her tasks and then she helped where necessary, especially when sowing seeds and gathering the fruit.



Ocladia had great deal of vitality and energy for working in the countryside. She liked the work so much that she forgot to eat, drink and rest. One hot afternoon, she even forgot to breathe and then she fainted.

Egolina the Fairy told everyone what had happened and quickly returned to the wheat field. They looked sadly at Ocladia and nobody dared to say anything. "She isn't dead", Amy the Fairy reassured them. She knew a lot about illnesses and cures. "But she urgently needs some vital nectar."





“I can make it”, said Raclet, “but I need to fill the large saucepan with magnolia pollen and jasmine essence.”

“Do you think you can find magnolias in flower at the end of the summer? That’s impossible!” said Egolina.

“Maybe not in the Forest of Dreams, but you might find some in more temperate zones.” Amy always had a solution for everything.





Then Bluebell surveyed the place with the telescope and located some magnolias on a distant hilltop. The fairy protested: “We’ll take too many days to transport the essence. We aren’t strong enough and our wings aren’t large enough...”

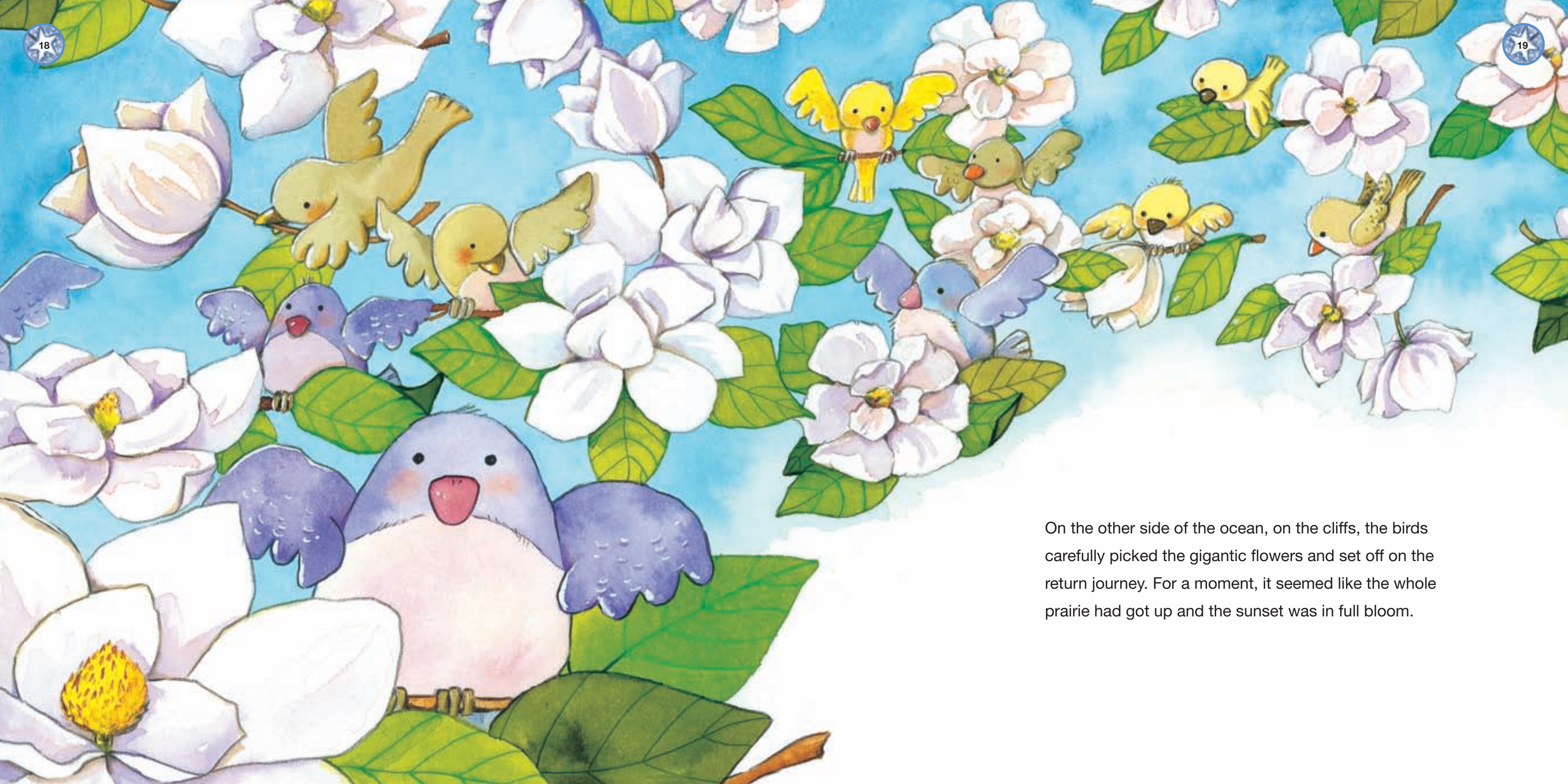


“Let’s ask the birds for help!” said Amy. She also suggested that Derna gather together a flock of birds and take them to the hilltop. To make the journey easier, Maisa the Fairy diverted all the air currents to flow in the same direction.



Meanwhile, Egolina explained to the queen bee that she needed jasmine pollen. “Don’t worry”, said the bee, “my children will look everywhere for it and they’ll bring it to you.”





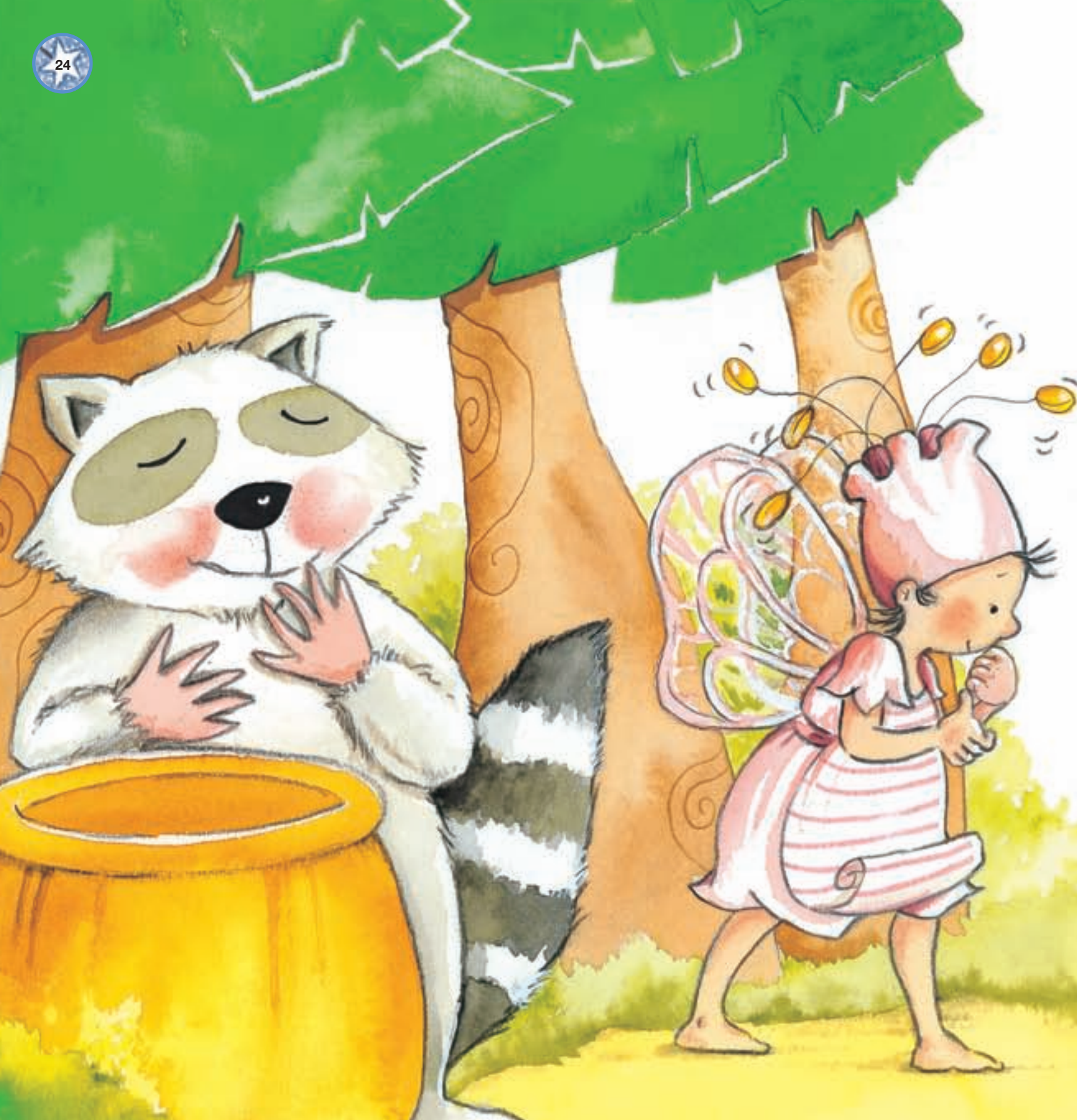
On the other side of the ocean, on the cliffs, the birds carefully picked the gigantic flowers and set off on the return journey. For a moment, it seemed like the whole prairie had got up and the sunset was in full bloom.

Ursul the bear carried the saucepan and placed it over the fire that Raclet had lit. Night began to fall and the glow-worms glowed like never before and the frogs croaked as loud as they could so that everybody could reach the meeting place.





The bees were the first to arrive. One by one, they shook the pollen from their legs so that it would fall inside the saucepan. Then the birds added the magnolia flowers full of essence.



Raclet stirred the potion until
she obtained a single drop of vital nectar.

“It’s ready”, said Amy.

The remedy fairy placed the drop on Ocladia’s lips.

Little by little she regained color and then opened her eyes.





From that day onwards, Ocladia dearly remembers when the whole forest took action for her. Now, she no longer works without resting. She has learnt to alternate work and leisure, but above all, she has learnt that working in a team can achieve much more than the work of a single fairy.

The fairies are very familiar with nature.
They don't wait for fruit to grow; they cultivate it,
according to the season, the climate and the
type of terrain where they live.

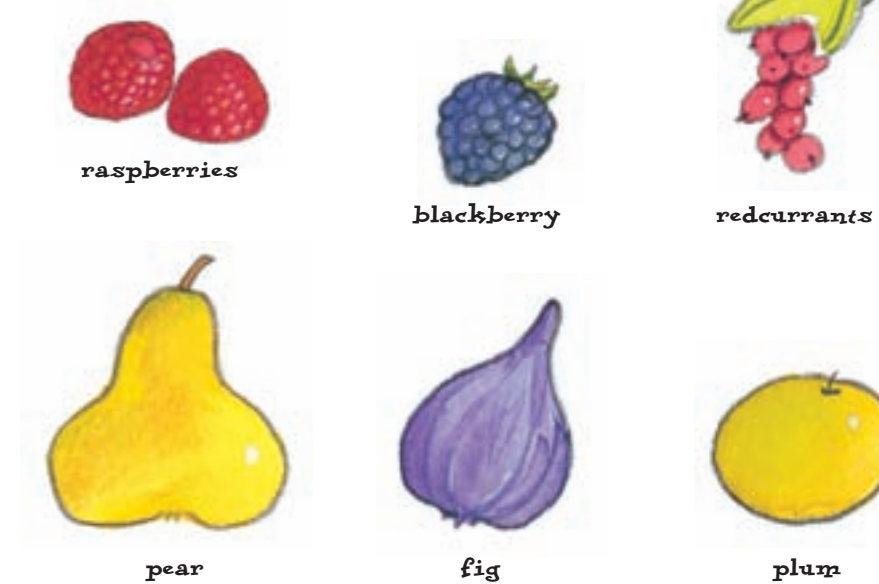
Learning more

The fairies' garden

Spring offers...



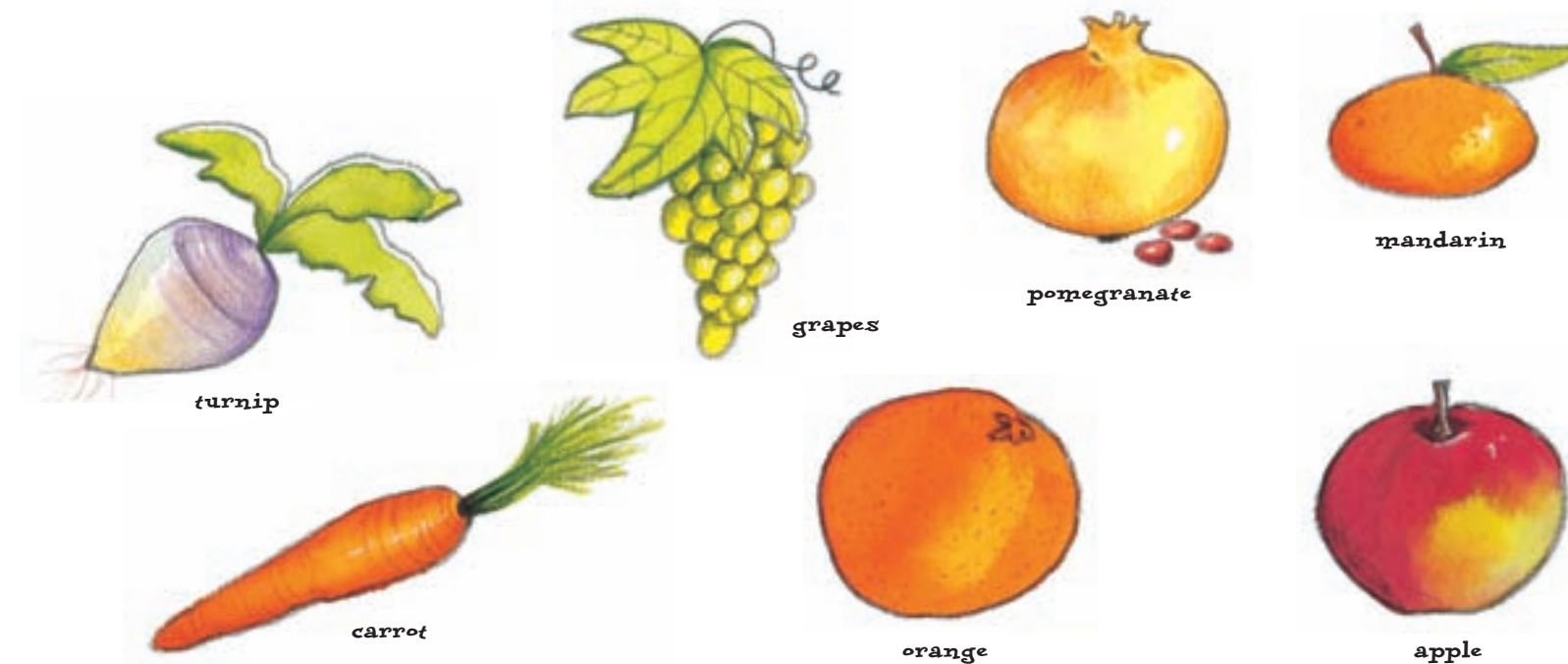
In summer we find...

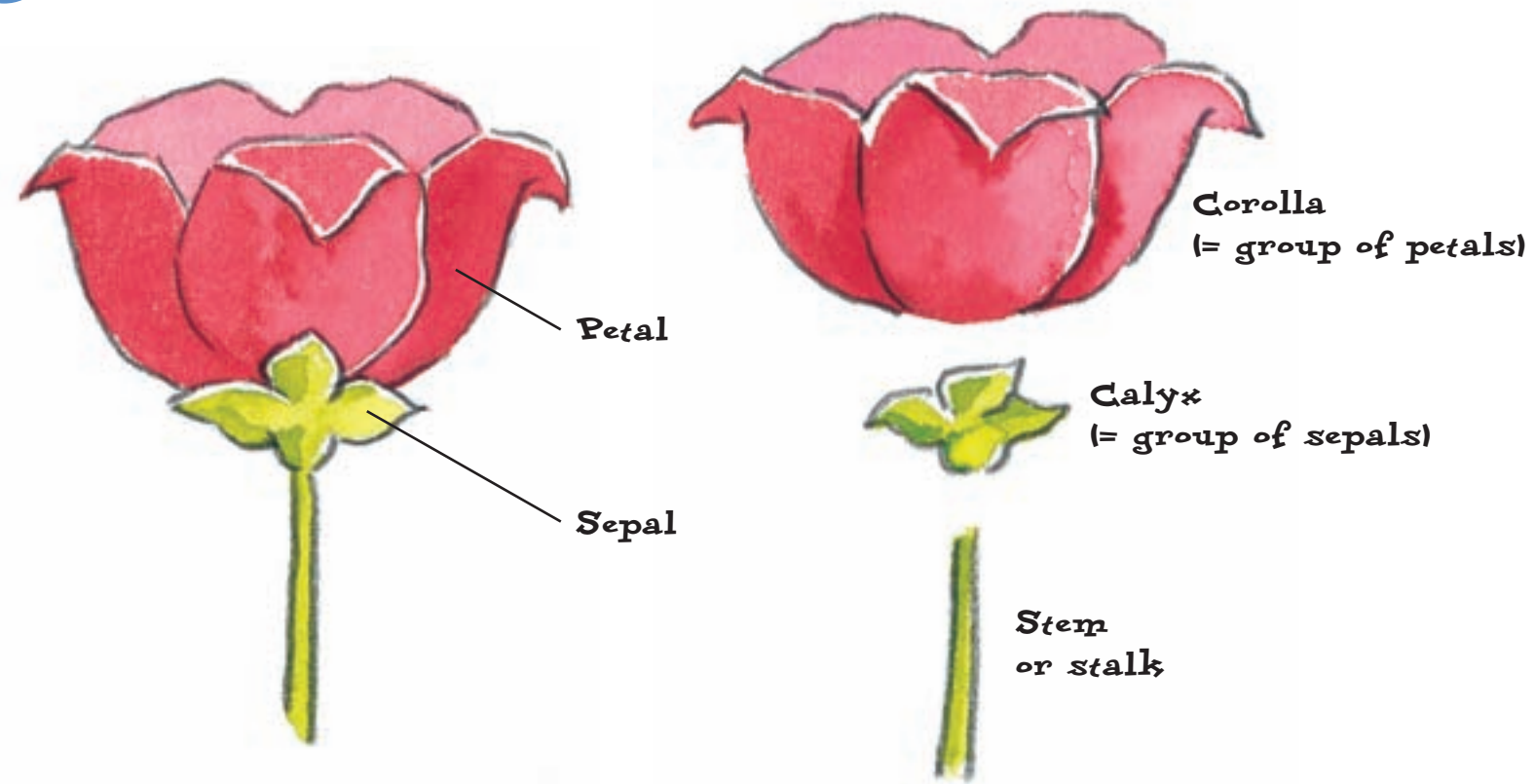


Autumn bring us...



Winter is the season of...

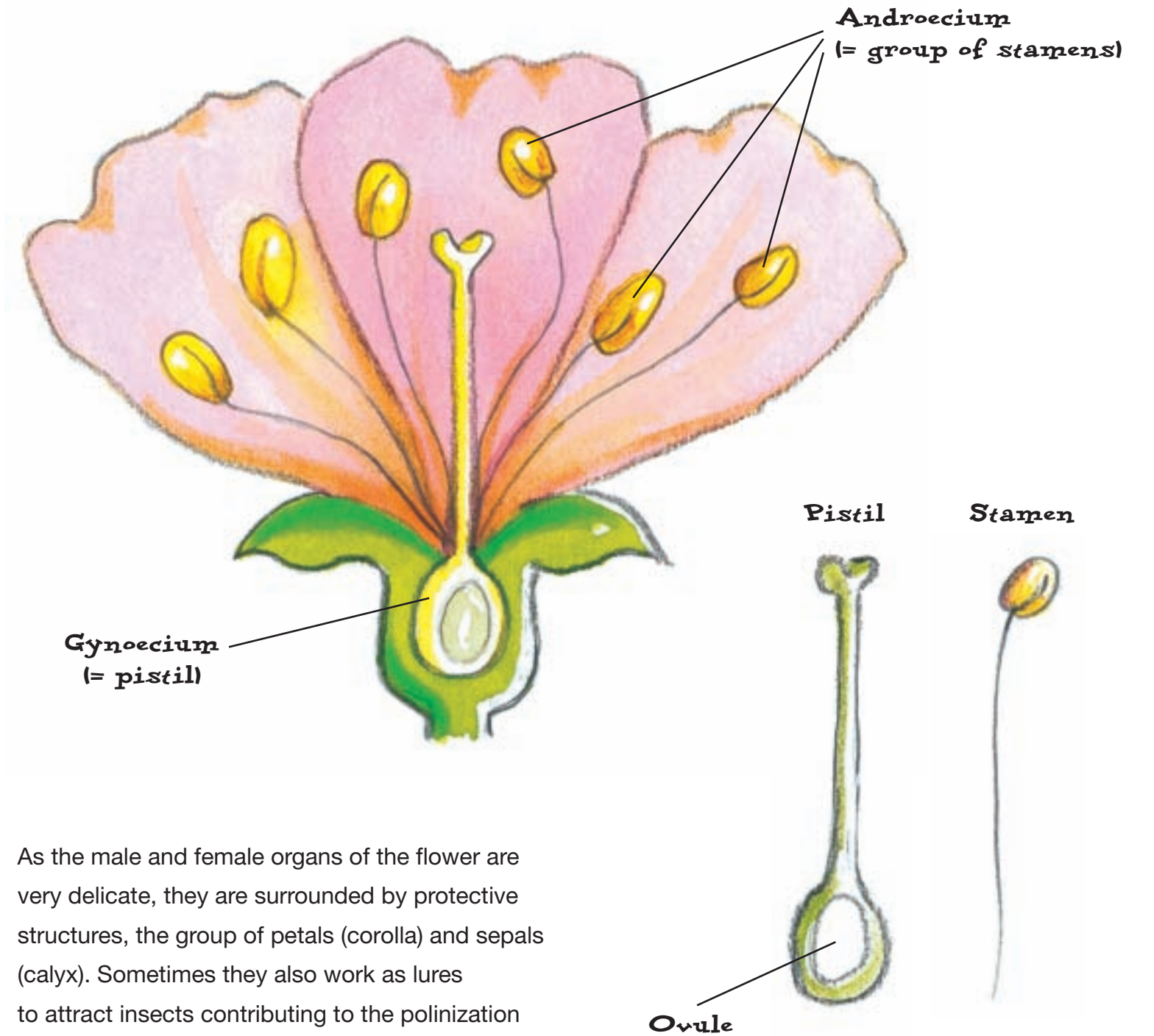




The parts of a flower

The flower is the reproductive structure of flowering plants. It has a male reproductive organ (androecium or group of stamens) and a female one (gynoecium or pistil). Both are filament shaped and are found in the central part of the flower. The stamens produce pollen, which at first glance

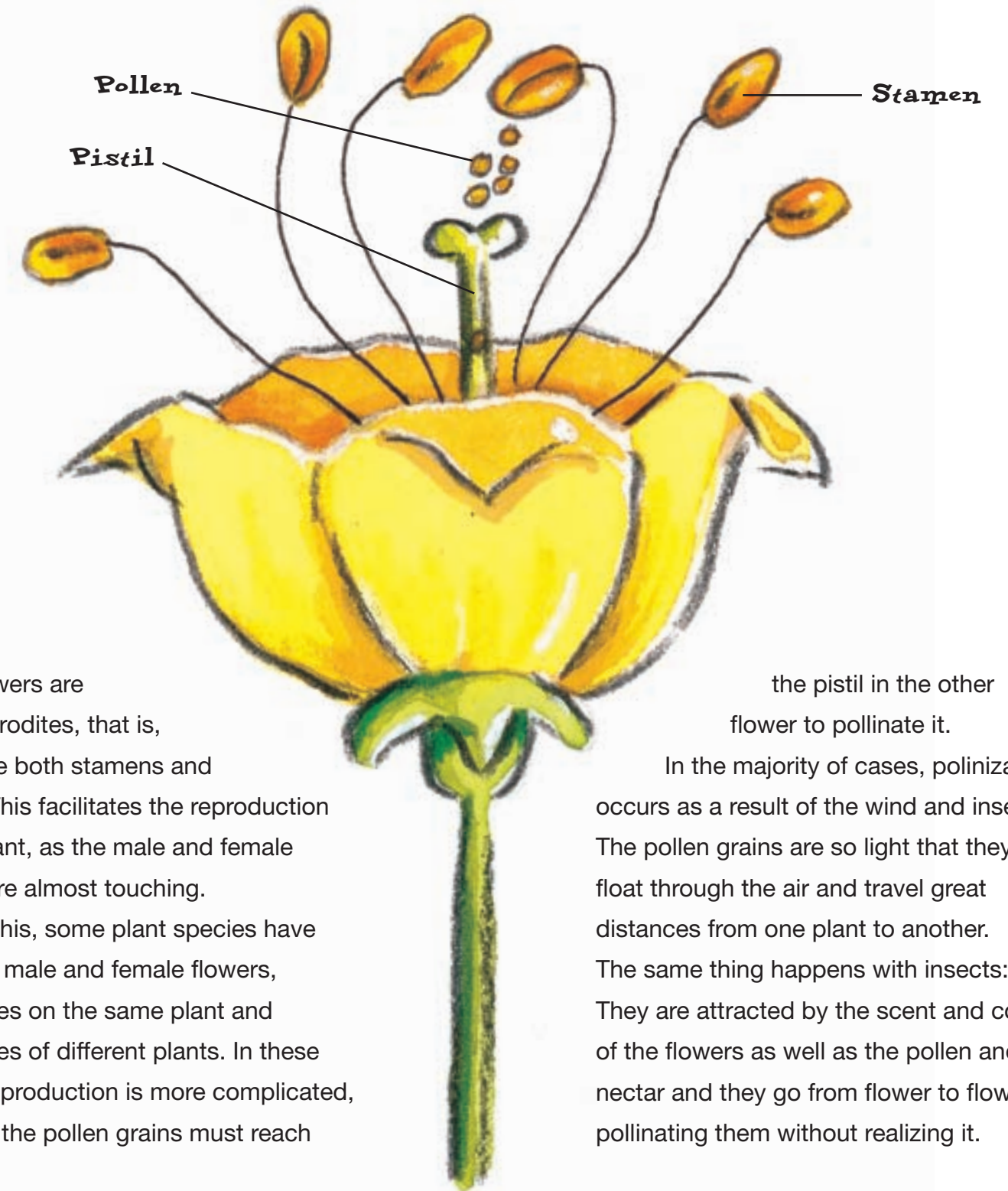
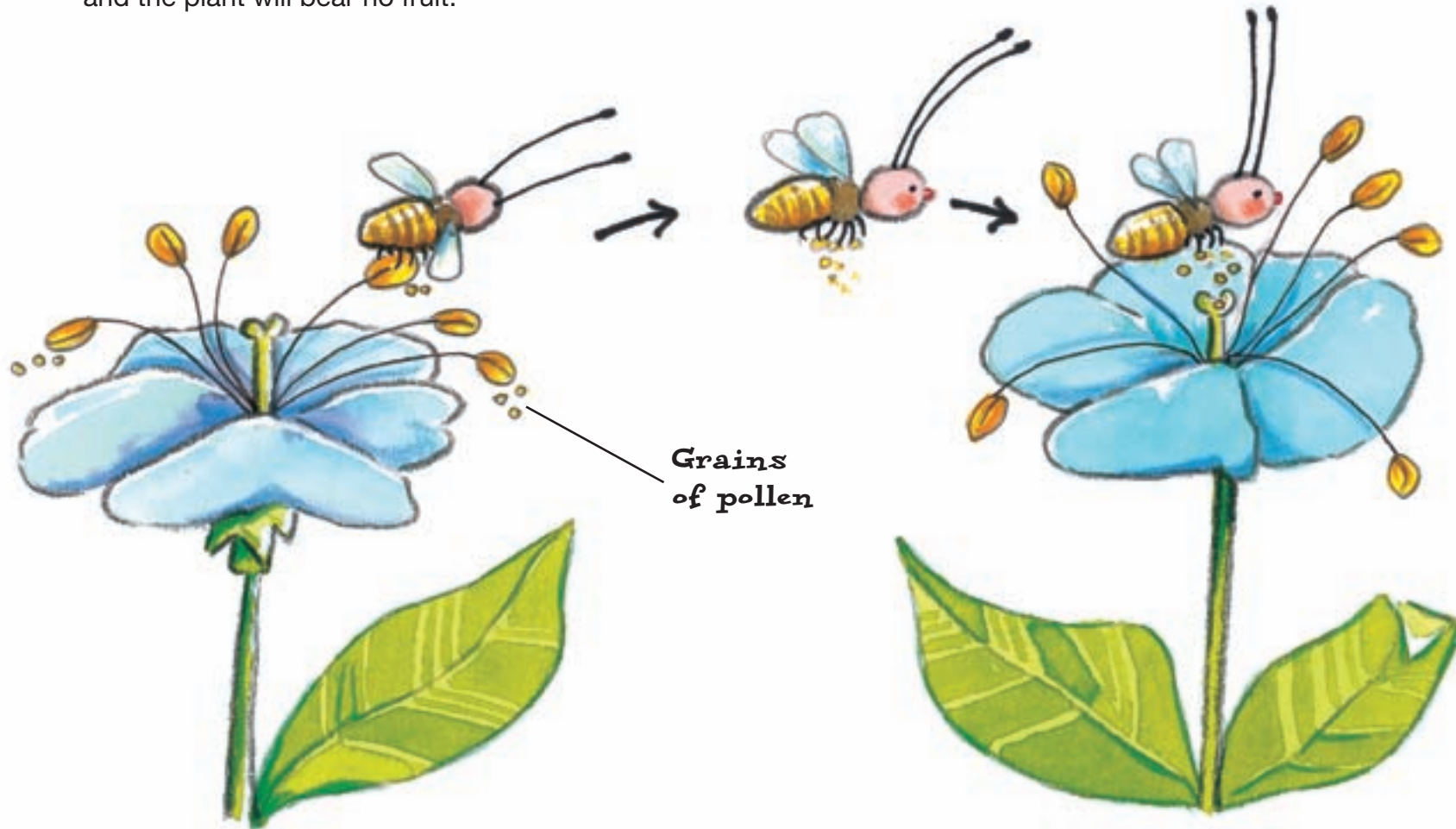
looks like a kind of fine dust, though it really consists in tiny grains. When these grains enter the pistil, the long thin tube found in the very centre of the flower, they can reach the ovary and pollinate the ovule. Only if this happens, will the flower grow into a fruit.



As the male and female organs of the flower are very delicate, they are surrounded by protective structures, the group of petals (corolla) and sepals (calyx). Sometimes they also work as lures to attract insects contributing to the pollination of the flower.

Polinization

Polinization is the journey made by the pollen grains from the stamens where they are produced to the flower pistil. If polinization does not occur, the ovule cannot be fertilized and the plant will bear no fruit.



Most flowers are hermaphrodites, that is, they have both stamens and a pistil. This facilitates the reproduction of the plant, as the male and female organs are almost touching. Despite this, some plant species have separate male and female flowers, sometimes on the same plant and sometimes of different plants. In these cases, reproduction is more complicated, because the pollen grains must reach

the pistil in the other flower to pollinate it.

In the majority of cases, polinization occurs as a result of the wind and insects. The pollen grains are so light that they float through the air and travel great distances from one plant to another. The same thing happens with insects: They are attracted by the scent and color of the flowers as well as the pollen and nectar and they go from flower to flower pollinating them without realizing it.

Solidarity

Solidarity is a brotherly or friendly relationship between members of a community or group, which leads people to share ideas, goals and responsibilities.

You show solidarity when you...

- Help to replant trees in a burnt zone.
- Recycle and reuse materials.
- Collect basic foods to send them where they are needed.

People expressing solidarity feel deeply united with one another, without taking into account the distance that separates them. They all work or take part in a common project, such as supporting a specific cause.

When a disaster such as an earthquake occurs on the planet, people acting in solidarity feel the need to respond and help, either by sending money, or with their own work helping to care for the wounded or rebuild the houses. In this case, we say that they are sympathetic to the cause of those affected.

You do not show solidarity when...

- You do a classmate's homework.
- Share your breakfast leaving nothing for yourself.
- Let everybody else do all the work when you should be working as a team.

The fairies tell us about...
Solidarity

Author: **Aleix Cabrera**

Illustrations: **Rosa M. Curto**

Design and layout: **Gemser Publications, S.L.**

© **Gemser Publications, S.L. 2010**

El Castell, 38 08329 Teià (Barcelona, Spain)

www.mercedesros.com

ISBN: XXX-XX-XXXXXX-XX-X

Printed in China

All rights reserved. No part of this book
may be reproduced in any form, by photostat,
microfilm, xerography, or any other means,
or incorporated into any information retrieval
system, electronic or mechanical, without
the written permission of the copyright owner.

